

FOR SALE OR TO LET

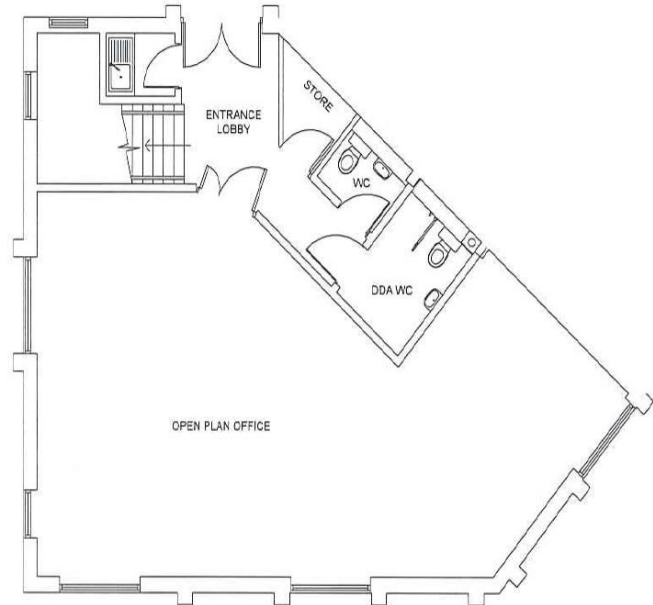
c. 2,000 SQ.FT

**8a BROOKFIELD
MOULTON PARK
NORTHAMPTON NN3 6WL**

8a is at planning stage. It will comprise an extension of 8 Brookfield and will stand prominently on the intersection of Red House Road and Lower Farm Road on the popular Moulton Park Business Park. The property will benefit from the following amenities:

- On Site Car Parking
- Raised access flooring
- Air conditioning
- Double Glazing
- Suspended ceilings and recessed lighting
- Toilets on Each Floor
- Carpeting throughout

Particular requirements may be incorporated into the design if required.



OPTION 3 - PROPOSED GROUND FLOOR PLAN

FURTHER INFORMATION

Strictly via the sole agent:

Hannah Bunting

Chown Commercial

Tel: 01604 604050

hb@chowncommercial.co.uk

Stephen Chown

Chown Commercial

Tel: 01604 604050

src@chowncommercial.co.uk

